

Age-related differences in encoding-retrieval similarity and their relationship to false memory

Jordan D. Chamberlain^a, Caitlin R. Bowman^b, Nancy A. Dennis^{a,*}

^a Department of Psychology, The Pennsylvania State University, University Park, PA, USA

^b Department of Psychology, The University of Wisconsin-Milwaukee, Milwaukee, WI, USA

ARTICLE INFO

Article history:

Received 2 July 2021

Revised 28 January 2022

Accepted 31 January 2022

Available online 5 February 2022

Keywords:

False memory

Encoding-retrieval similarity (ERS)

Aging

ABSTRACT

Typical aging is associated with increases in false memory rates among older adults. Such errors are frequently associated with differential neural activity during encoding and retrieval in older compared to younger adults within visual cortices and the hippocampus. It remains unknown how pattern similarity reductions relate to false memories in healthy aging. Using encoding-retrieval similarity (ERS) analyses in a sample of younger and older adults, we examined how the similarity of neural patterns between memory phases associated with target and lure objects was impacted by age and contributed to false memory rates. Single-item ERS for targets and lures was reduced by age throughout much of the ventral visual stream and the posterior hippocampus. Furthermore, ERS associated with perceptual lures within the visual stream maintained differential relationships with false memory. Finally, a global ERS metric accounted for age deficits in single-item ERS, but did not contribute to false memory rates. These findings highlight the contribution of age-related reductions in ERS across multiple representational levels to false memories in healthy aging.

© 2022 Elsevier Inc. All rights reserved.

1. Introduction

Age-related increases in false memories are a significant source of memory impairment in aging (McCabe et al., 2009). Such errors of commission often occur when older adults fail to encode and/or retrieve item-specific details from previous experiences. When encoded details are missing at the time of retrieval, it can cause reliance on other aspects of the encoding episode, such as gist traces (Koutstaal, 2003; Koutstaal & Schacter, 1997; Norman & Schacter, 1997; Tun et al., 1998) or one's feelings and thoughts during encoding that are evoked by the related lure (Folville et al., 2019; Hashtroudi et al., 1990). Perceptual similarity between an encoded item and a retrieval lure has also been shown to be a significant factor underlying false memories (Bowman et al., 2019; Dennis & Turney, 2018; Slotnick & Schacter, 2004). Research has suggested that perceptual overlap between targets and lures is especially problematic in aging (Dennis & Turney, 2018; Stark et al., 2013; Turney & Dennis, 2017). While the vast majority of research has focused on retrieval processes to explain such age-related increases in false memory errors, failures of encoding, as well as the rela-

tionship between encoding and retrieval processing, are also key determinants in understanding both memory success and memory errors of commission, irrespective of age (Ritchey et al., 2013; Wing et al., 2020).

Within studies of aging, the examination of false memories has largely focused on age differences in blood oxygen level dependent (BOLD) differences between veridical and false memories during memory retrieval. Results of these studies have identified several critical findings related to perceptual false memories. Specifically, the studies find that older adults tend to under-recruit occipital regions supporting true memories and over-recruit both prefrontal and lateral temporal regions during the execution of false memories (Dennis, Johnson, et al., 2014; Dennis & Turney, 2018; Paige et al., 2016; Webb, Turney, & Dennis, 2016; Webb & Dennis, 2018). Activity in occipital regions, including early visual cortex and lingual gyrus, are posited to reflect sensory signals that are sensitive to the original presentation of previously viewed items (e.g., targets; Dennis et al., 2012; Slotnick & Schacter, 2004; Wheeler & Buckner, 2004). Greater activity for true compared to false memories in occipital regions has been posited to reflect the fact that such details are available at retrieval for targets, yet not for related lures. This differential recruitment has been taken as evidence that older adults do not utilize perceptual details from encoding when later faced with the need to

* Corresponding author at: Department of Psychology, The Pennsylvania State University, University Park, PA, USA

E-mail address: nad12@psu.edu (N.A. Dennis).

make old and/or new memory decisions during retrieval. This conclusion is consistent with behavioral studies that find that, even when older adults encode details that are needed to distinguish between old and new information, they do not take advantage of this information during the retrieval process (Bowman & Dennis, 2015; Bulevich & Thomas, 2012; Cohn et al., 2008; Koutstaal, 2003; Mitchell et al., 2013; Multhaup, 1995; Park et al., 1984; Pezdek, 1987; Rahhal et al., 2002). The foregoing findings further suggest that encoded visual representations are not successfully recapitulated during retrieval in the same manner as found in younger adults.

Similar age-deficits in utilizing encoding details to support identification of targets and lure rejection are also observed in research showing that older, compared with younger adults, exhibit impairments in the ability to engage in a recall-to-reject retrieval strategy when viewing perceptually similar items (Bowman & Dennis, 2015; Castel & Craik, 2003; Gallo, 2006; Jacoby, 1999; Jennings & Jacoby, 1997; Multhaup, 1995). That is, during retrieval, when making memory decisions about targets and perceptually related lures, recall-to-reject theory posits that one must retrieve details regarding past events in order to correctly identify novel information and reject it as new (Gallo, 2006; Jennings & Jacoby, 1997; Multhaup, 1995). Implicit in the recall-to-reject process is that one must have available to them the necessary details from past events in order to carry out the recall-to-reject decision. If item specific details are absent to older adults at the time of retrieval, they rely on the retrieval of gist traces when making memory decisions in the presence of lures (Balota et al., 1999; Kensinger & Schacter, 1999; Koutstaal & Schacter, 1997; Norman & Schacter, 1997; Schacter et al., 1997; Tun et al., 1998). This would lead them to fail to identify related, yet novel, items as new when the gist traces between the studied item and lure supports the identity of both items.

The notion that neural processes during encoding are recapitulated at retrieval, leading to memory success, has been recently investigated by examining the correlation of neural patterns across memory phases in young adults. That is, using encoding retrieval similarity (ERS) analyses, studies have demonstrated that information shared between two memory phases benefits memory performance (Kuhl et al., 2011; Ritchey et al., 2013; Trelle et al., 2019; Ye et al., 2016). For example, early work by Ritchie and colleagues (2013) showed that the similarity of neural patterns between encoding and retrieval associated with scenes was predictive of successful memory performance in younger adults. Specifically, both single-item and set-level ERS were associated with successful remembering within the ventral visual stream and frontal cortices (Ritchie et al. 2013). This finding is supported by a more recent study by Trelle et al. (2020) who also found that ventral temporal cortex ERS was predictive of veridical memory retrieval. Accordingly, research suggests that the similarity in neural patterns within ventral visual cortices across memory phases plays a critical role in memory success in younger adults.

In contrast to the positive relationship observed with respect to neural pattern similarity and veridical memories, findings related to neural pattern similarity and false memories are more nuanced. Notably, Ye et al. (2016) found greater global ERS for false compared to true memories in late occipital regions. Such findings support computational models of false memory formation such as MINERVA2 that hypothesize that memory traces at retrieval are related to those at encoding (Arndt & Hirshman, 1998). Further, Lee et al. (2019) observed that while greater category ERS was associated with false memories compared to correct rejections, the opposite relationship was observed at the item level as reduced item-level ERS was associated with false memories compared to correct rejections. Lee et al. (2019) also found the

strength of false memories was discriminable from correct rejections in regions incorporating the ventral visual stream. Recent work by Wing et al. (2020) found evidence that concept-specific ERS within late visual cortex and hippocampus positively predicted false memory rates in younger adults. Wing et al. (2020) further found that the interaction of pattern similarity between visual cortex and hippocampus relates to higher incidents of false memories in younger adults. Finally, Chadwick et al. (2016) revealed that pattern similarity corresponding to semantic relatedness contributes to more false memories associated with gist-based processing. Taken together, ERS findings highlight how fine-grained information maintained within neural patterns of activity underly erroneous memory performance within younger adults. Additionally, prior work suggests that neural recapitulation may depend on the level of analysis (i.e., item-level, concept-level, global-level).

Despite these studies, little work has examined how the recapitulation of brain patterns from encoding to retrieval is affected by perceptual similarity. While previous studies investigated ERS of memory decisions, critically, however, none examined how ERS may vary according to item presentation history (e.g., target vs. lure) or according to lure relatedness. Additionally, no work to date has examined whether age-related differences in ERS contribute to age-related increases in false memories. Highlighting the role of the ventral visual cortex in accounting for age deficits in veridical memory retrieval, in a recent study Hill and colleagues (2021) demonstrated that older adults exhibit reduced ERS for veridical scene memory compared to younger adults in select portions of the ventral visual stream, including fusiform cortex. Additional work by Folville et al. (2019) found that older adults exhibited reduced item-level ERS in medial temporal regions for scenes and words compared to younger adults, while also reporting higher ratings of subjective vividness and fewer objectively recalled details. Such findings support the idea that older adults do not retain detailed representations of information from encoding to retrieval in the same manner as younger adults, losing the retrieval benefit of perceptual details presented during encoding (Daselaar et al., 2006; Koutstaal, 2003). Supporting this point, reduced distinctiveness of neural representations during both encoding and retrieval has been documented across a handful of studies in the aging literature (Bowman et al., 2019; Koen & Rugg, 2019; Trelle et al., 2019, 2020). For example, Koen & Rugg (2019) showed that neural patterns associated with objects and scenes during encoding were less distinctive (more dedifferentiated) in the parahippocampal place area in older compared to younger adults, and that the distinctiveness of these neural patterns positively predicted subsequent item recognition across the entirety of their sample. While Koen et al. (2019) did not directly assess the relationship between dedifferentiation of neural patterns associated with objects and scenes and false memory performance, the results nonetheless carry important implications for false memories. Most notably, the results suggest that the distinctiveness of neural patterns encoded are related to the ability to recognize items later. Thus, reduced distinctiveness of this information can lead to more liberal memory decisions at retrieval, in particular for information that is similar but not the same as previously studied information. Taken together, this suggests that behavioral and neural components of representational quality decline in older adults and differences in the reactivation of memory representations likely contribute to memory errors in aging.

However, to our knowledge, no study has examined how such encoding-retrieval similarity of neural patterns associated with target and lure items are impacted by age and how age differences in ERS underlie age-related increases in false memories. In order to investigate these points, the current study examined both target-target ERS and well as target-lure ERS throughout cortical regions

critical to memory retrieval in both younger and older adults. The study also examined how age differences in ERS correspond to behavioral differences between younger and older adults, with a focus on explaining age-related increases in false memories. Focusing on past work in the visual and medial temporal cortices we posited that older adults would exhibit age-related reductions in encoding-retrieval similarity within these regions, and that such reductions would be associated with false memory rates in aging. Additionally, in line with our work on perceptual relatedness among lure items, we expected greater ERS for item lures compared to thematic lures, particularly within visual cortex (Turney & Dennis, 2017). Finally, building on prior work with lure relatedness in aging, we expected item lure ERS in visual cortices to positively predict false memory rates, and for age to moderate this relationship such that older adults depicted a more positive relationship between ERS and false memory rates (Bowman et al., 2019; Bowman & Dennis, 2015; Paige et al., 2016).

2. Materials and methods

2.1. Participants

Twenty-seven young adults and 27 older adults were recruited from The Pennsylvania State University and State College community, respectively. All participants were right-handed, native English speakers who were screened for contraindications for MRI and neurologic and psychiatric disorders. All received monetary compensation for their participation. Two young adults were excluded from analyses due to failure to complete the task (1 subject) and movement in excess of 2.5 mm within a run (1 subject), leaving data from 25 young adults included in all analyses ($M = 22.32$ years old, $SD = 3.275$ years, range = 18–31; 17 females). Participants were primarily white ($n = 43$ [83%]) and well-educated ($M = 16.58$ years, $SD = 2.46$). Four older adults were excluded from analyses due to technical issues during data collection (2 subjects) and movement in excess of 2.5 mm within a run (2 subjects), leaving data from 23 older adults included in all analyses ($M = 71.04$ years old, $SD = 8.04$ years old, range = 60–84; 12 females). Other univariate analyses from the young adult group (Bowman et al., 2017; Bowman & Dennis, 2016) and multivoxel pattern analyses from retrieval (Bowman et al., 2019) have been reported previously. All participants completed written informed consent and all experimental procedures were approved by Penn State's Office of Research Protections. Additionally, all older adults showed no indicators of cognitive impairment, assessed by the Mini Mental State Exam (Folstein et al., 1983) scores ≥ 28 (mean = 29.65 [0.65]) or depression, assessed by the Geriatric Depression Scale ([Sheikh & Yesavage, 1986] [mean = 0.88 1.08]).

2.2. Stimuli

The stimuli description and task procedures were detailed in our previously published papers (Bowman et al., 2019; Bowman & Dennis, 2016). They are reprinted here for completeness. Stimuli consisted of 316 images of common objects collected from the Band of Standardized Stimuli database (Brodeur et al., 2010) as well as an Internet image search. Images were cropped and resized to approximately 400×400 pixels and equated for resolution. Images were displayed at a screen resolution of 1024 (H) \times 768 (V) at 75 Hz. At the viewing distance of 143 cm, the display area was 20° (H) \times 16° (V) with experimental stimuli subtending 5° (H) \times 4° (V).

Encoding items included 96 images, each an exemplar from a distinct category or conceptual theme. At retrieval, 4 types of items were presented: targets, item lures, thematic lures, and novel lures

(see Fig. 1 for examples). Item lures were an alternative exemplar of the same item presented at encoding. Thematic lures were a new item within the same general category or theme of an item presented at encoding. Novel lures were items drawn from categories not presented during encoding. (See Bowman et al., 2019 for a full description of stimuli norming). While prior examinations of encoding-retrieval similarity have used a word cue in conjunction with blank screen at retrieval to tap into specific mnemonic processes (Deng et al., 2021; Trelle et al., 2019), we specifically chose to utilize object images at retrieval to examine processes associated with perceptual lures of varied relatedness (Bowman et al., 2019; Dennis, Bowman, et al., 2014; Turney & Dennis, 2017).

2.3. Experimental design

Participants completed the encoding and retrieval phases in a single scanning session. Stimuli were displayed using COGENT in MATLAB (MathWorks, Natick, MA) and were back-projected onto a screen that participants viewed through a mirror attached to the head coil. Behavioral responses were recorded using a 4-button response box. Scanner noise was reduced with headphones, and cushioning was used to reduce head motion.

Encoding was incidental, and participants were instructed to make a size judgment for each of 96 items (i.e., “Is this item bigger or smaller than a shoebox?”). Each image was presented for 1500 msec followed by 500-msec additional responding time before automatically advancing to the next item. Each item was followed by a variable intertrial fixation ($M = 2470$ msec, $SD = 1760$ msec) to aid in deconvolving the hemodynamic response (Dale, 1999). After the encoding phase, participants underwent structural scans and were given instructions for retrieval. During retrieval, participants were presented with all 96 studied items (targets), both the item and thematic lures from each of the encoding categories (96 of each), and 28 novel lures. All stimulus categories were presented in an intermixed fashion during each run, pseudorandomly ordered to ensure that no more than 3 stimuli of the same type were presented sequentially. Each stimulus was displayed for 3 sec while participants made their memory responses. Each trial was followed by a variable intertrial interval ($M = 2340$ msec, $SD = 1440$ msec). In accord with typical instructions for the remember-know-new paradigm, participants were instructed to respond “remember” if they believed that the item was presented during the first phase of the experiment and they remembered specific, vivid details of its prior presentation. Participants were instructed to respond “familiar” if they believed the item was presented during the first phase but they could not recall specific details about its prior presentation. Instead of the typical “new” response, participants were asked to respond with 2 distinct “new” options— “unfamiliar” or “different” (Matzen et al., 2011). Participants were instructed to respond “different” if they believed the item was new and they could recall aspects of truly presented item(s) that indicated the item was not presented during the study phase (i.e., recollection rejection). Participants were instructed to respond “unfamiliar” if they believed an item was new because it did not resemble or bring to mind anything from the previous encoding phase (i.e., unfamiliar item). A practice session before the retrieval scans ensured that participants understood the retrieval instructions and the distinction between each response option before beginning the retrieval scans.

2.4. fMRI data acquisition

Imaging data was acquired using a Siemens (Berlin, Germany) 3-T scanner equipped with a 12-channel head coil. A T1-weighted sagittal localizer was acquired to locate the AC–PC. Images were



Fig. 1. Example stimuli. Participants viewed objects during encoding while making size judgments. During retrieval, participants viewed objects that were targets (the same object viewed during encoding), item lures (perceptually related objects), thematic lures (object from the same category), and novel lures (completely unrelated objects). Figure reproduced from Bowman et al., 2019.

then prescribed at an oblique angle that prevented data collection in the area of the orbits. A high-resolution anatomic image was acquired in the sagittal plane using a magnetization prepared rapid gradient echo sequence with a 1650-msec repetition time, 2.03-msec echo time, 256-mm field of view, 256-mm² matrix, 160 sagittal slices, and 1-mm slice thickness for each participant. Echo-planar functional images were acquired using a descending acquisition, 2500-msec repetition time, 25-msec echo time, 240-mm field of view, an 80-mm² matrix, and 42 axial slices with 3-mm slice thickness, resulting in 3-mm isotropic voxels. Ninety-one volumes were collected in each of 2 functional runs of the encoding task. One hundred seventy-five volumes were collected in each of the 4 functional runs of the retrieval task. Specifically, the acquisition angle was set to ensure full coverage of the temporal pole and medial temporal regions and sufficient signal-to-noise ratio (SNR) during functional imaging acquisition. Age differences in functional signal-to-fluctuation-noise-ratio (SFNR) are reported per region of interest in supplementary table 4.

2.5. Statistical analysis

Behavioral data

We first examined overall memory performance (d') by collapsing scores across lure types and old (“remember,” “familiar”) and new (“different,” “unfamiliar”) responses. We used planned t tests to examine age differences in d' . We were also interested in whether age differences were driven by hits or false alarms. To do so, we conducted a mixed-factor ANOVA with age and trial type as factors and proportion of items labeled “old” as the dependent variable.

2.5.1. fMRI pre-processing. Anatomic and functional images were skull stripped using the Brain Extraction Tool (BET) in FSL version 5.0.9 (www.fmrib.ox.ac.uk/fsl). FSLs MCFLIRT function was then used for within-run realignment and motion correction in each functional run, aligning all volumes to the middle volume. Between-run realignment was performed using Advanced Normalization Tools (ANTS: <http://stnava.github.io/ANTS/>): the first volume of each run was aligned to the first volume of the first run (i.e., the first volume from the first encoding run), and that transformation

was then applied to all volumes in the corresponding run. These realigned functional images were then submitted to FSLs fMRI Expert Analysis Tool (FEAT) where they were high-pass filtered at 100 seconds and underwent minimal spatial smoothing at 2 mm FWHM.

2.5.2. Regions of interest. To define subject-specific anatomic regions of interest (ROIs) in native space, we submitted the high-resolution anatomic image from each subject to Freesurfer version 6 (<https://surfer.nmr.mgh.harvard.edu/>). Based on our interest in the correspondence of neural patterns between encoding and retrieval related to visual memories, we selected the following anatomic ROIs throughout the ventral visual stream: early occipital cortex (combination of lingual gyrus and cuneus labels in Freesurfer), lateral occipital cortex, posterior fusiform cortex (defined as the portion of fusiform cortex posterior to the most anterior slice of parahippocampal cortex), and inferotemporal cortex. Among MTL regions we selected entorhinal cortex, and anterior and posterior hippocampus. To define the anterior and posterior hippocampal regions we split each participants hippocampus at the middle slice. If a participant had an odd number of hippocampal slices, the middle slice was assigned to the posterior hippocampus (Bowman & Zeithamova, 2018). Each ROI was broken down bilaterally based on recent work suggesting that laterality is critical to assessing the relevance of neural patterns associated with false memories (Dennis et al., 2012; Garoff-Eaton et al., 2006; Koutstaal et al., 2001; Slotnick & Schacter, 2006; Wing et al., 2020). Given prior investigations reporting laterality effects in visual cortex associated with false memories, we expected greater ERS in right compared to left ERS as a secondary hypothesis (Paige et al., 2016; Slotnick & Schacter, 2004; Wing et al., 2020). We collapsed across hemispheres for regions that failed to exhibit a significant age X trial type X hemisphere interaction for subsequent individual differences analyses (bilateral ROI sizes in voxels are reported in supplementary table 1; see Results-Individual Differences between Trial Type ERS, and False Memories).

2.5.3. Multivariate pattern analyses. To estimate neural patterns associated with individual trials, a GLM was generated using FSLs FEAT with 1 regressor for each trial at both encoding and retrieval

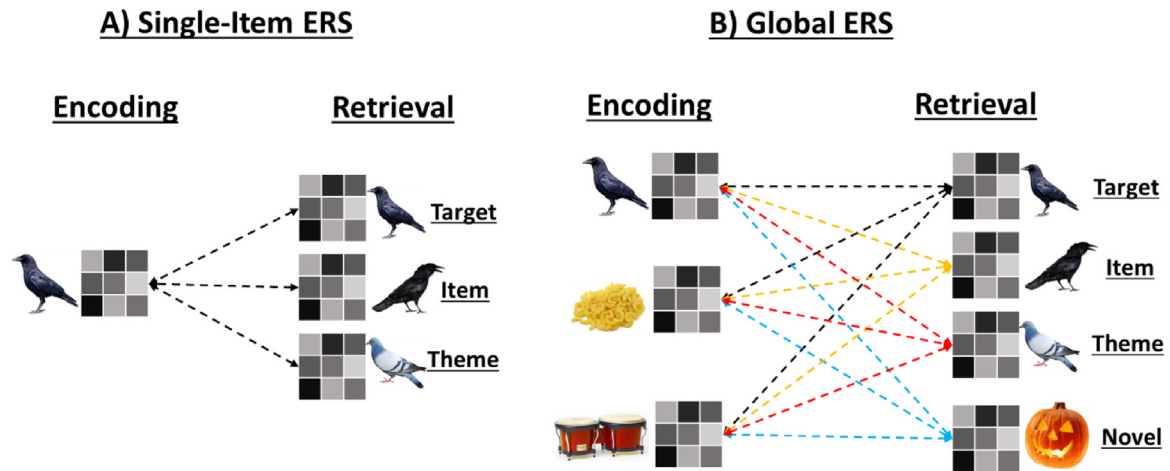


Fig. 2. Schematic of ERS metrics. (A) We calculated ERS between single items at encoding and their corresponding target, item lure, and thematic lure at retrieval. (B) We created a global ERS metric per ROI in which we calculated the similarity of each trial at encoding with each trial at retrieval to account for baseline group differences in neural similarity.

(48 trial regressors for encoding runs, 79 for each retrieval run) with a least-squares-all (LSA; [Abdulrahman & Henson, 2016](#)) approach, as this method of single-trial model estimation has been effective for similar memory designs ([Folville et al., 2019](#); [Hill et al., 2021](#); [Kobelt et al., 2021](#); [Staresina et al., 2012](#)). An additional 6 nuisance regressors were included in each run corresponding to translational and rotational movement. From these models, individual whole-brain beta parameter maps were generated for each trial at encoding and retrieval. In a given parameter map, the value in each voxel represented the regression coefficient for that trial's regressor in a multiple regression containing all other trials in the run and the motion parameters. These beta parameter maps were then concatenated across runs and submitted to the CoS-MoMvPA toolbox (<https://www.cosmomvpa.org/>) in Matlab version 2017b (<https://www.mathworks.com/>) for ERS analyses.

2.5.4. Encoding-retrieval pattern similarity (ERS). We performed an ERS analysis based on retrieval trial type (target; item lure; theme lure) to understand how aging affects the recapitulation of neural patterns between encoding and retrieval related to the viewing of targets and related lures. By assessing ERS values based on the retrieval trial type, we can assess how the correspondence of information between encoding and retrieval underlies false memory performance, and how this correspondence is impacted by processes of healthy aging. To characterize how the correspondence of neural patterns from encoding to retrieval is related to different trial types and how that differs with age, we used a representational similarity analysis ([Kriegeskorte et al., 2008](#)) in which we calculated the similarity score (Pearson's r ; [Ritchey et al., 2013](#)) between the beta parameter pattern of a given item during encoding and that of (1) its re-representation as a target during retrieval, (2) the presentation of its corresponding item lure during retrieval, and (3) the presentation of its corresponding thematic lure during retrieval. After all of these r -values were computed for each of 96 studied items, a Fisher z -transformation was performed and values within a condition (i.e., target-target, target-item lure, target-theme lure; [Fig. 2A](#)) were averaged within each subject and divided by their standard deviation, generating an ERS effect size for each condition ([Bowman & Zeithamova, 2018](#)). This process resulted in 3 ERS values per subject, per ROI, corresponding to our 3 conditions of interest (target-target ERS; target-item lure ERS; and target-thematic lure ERS). Trials corresponding to novel lures were estimated in the single trial model but were not included in initial

ERS analyses as novel lures at retrieval did not have corresponding items during encoding. Novel lures were later used in the calculation of global ERS. To test for differences across retrieval trial types in the correspondence of patterns between encoding and retrieval, we computed a 2 (hemisphere: left, right) \times 2 (age group: young, older) \times 3 (ERS comparison: target-target, target-item lure, target-thematic lure) mixed-factors ANOVA per ROI.

To assess how the recapitulation of brain patterns relates to behavioral performance, we computed separate multiple regression models for each ROI with overall perceptual, and thematic, false alarm rates as the dependent measures. We computed the foregoing multiple regression models using the following predictors simultaneously: (1) target-target, target-item lure, and target-thematic lure ERS values (2) age group (young, older) as a categorical predictor, and (3) age \times ERS value interaction effects for each of the ERS comparisons.

Recent research suggests that age differences in neural recapitulation can be accounted for by baseline differences in neural similarity between younger and older adults, as older adults have reduced pattern similarity compared to younger adults ([Hill et al., 2021](#)). To account for the possibility of such baseline age differences in the current study, we calculated a global ERS value within each region of interest to estimate the general degree of recapitulation between items viewed during encoding and retrieval (i.e., the similarity of all items at retrieval and all items at encoding). Recent work by [Ye et al. \(2016\)](#) and [Wing et al. \(2020\)](#) have found global ERS to be associated with false memory rates in younger adults. Furthermore, such a global ERS metric is posited to reflect the general strength of recapitulation according to global matching models of episodic memory such as MINVERVA2 ([Arndt & Hirshman, 1998](#)). It is therefore possible that older adults have a reduced baseline ERS as compared to younger adults, and this global ERS explains variance above and beyond single-item ERS when predicting false memory rates. To account for this possibility, we calculated the similarity score between a beta parameter of a given trial at retrieval and that of every item during encoding within each region of interest ([Fig. 2B](#)). We replicated the above analyses for regions that exhibited a significant age effect while including this global ERS metric as a covariate.

Finally, to correct for multiple comparisons and reduce the effect of false positives, we conducted permutation testing for each significant finding. Specifically, we shuffled the data for every participant and reconducted the ANOVA or multiple linear regression

model (Kherad-Pajouh & Renaud, 2015). We also incorporated a Benjamini-Hochberg p -value correction into our permutation tests (Benjamini & Hochberg, 1995). We repeated this procedure 10,000 times per statistical test to build a null distribution to simulate the potential significance that could be obtained if our effects did not exist.

3. Results

3.1. Behavioral results

Behavioral results from this dataset are reported in Bowman et al. (2019), we report the major findings here for completeness. Overall memory performance was indexed by d' collapsed across lure types and across multiple old (“remember,” “familiar”) and new (“different,” “unfamiliar”) responses. As expected, young adults showed significantly higher d' than older adults ($t [46] = 3.10, p = 0.003$), indicating that older adults did not distinguish between old and new items during retrieval as well as young adults.

We were also interested in whether this overall age deficit was driven by an age-related increase in false alarms. We therefore computed a mixed-factor ANOVA with age and trial type as factors and proportion of items labeled “old” as the dependent variable. Results revealed a significant main effect of trial type ($F [1.83,84.15] = 708.94, p < 0.001$) with the highest proportion of “old” endorsement for targets ($M = 0.81, SD = 0.10$), followed by item lures ($M = 0.41, SD = 0.19$), then thematic lures ($M = 0.10, SD = 0.10$), and the lowest endorsement of novel lures ($M = 0.02, SD = 0.03$). There was also a significant main effect of age ($F [1,46] = 12.66, p = 0.001$), with older adults endorsing items as old at higher rates ($M = 0.38, SD = 0.09$) than young adults ($M = 0.29, SD = 0.09$). Finally, there was a significant age \times trial type interaction ($F [1.83,84.15] = 17.80, p < 0.001$). Post-hoc independent samples t -tests showed that older adults had more false recognitions than young adults for item lures ($t [46] = 4.72, p < 0.001$) and thematic lures ($t [46] = 2.32, p = 0.03$) (but that reliable age differences in “old” responses did not emerge for targets ($t [46] = 1.01, p > 0.05$) or novel lures ($t [46] = 0.63, p > 0.05$)).

3.2. Encoding-retrieval similarity (ERS) trial type differences

We next examined age and trial type differences among ERS values in each region of interest. To do so we conducted a 2 (hemisphere: left, right) \times 3 (trial type: target, item lure, theme lure) \times 2 (age group: young, old) within-between repeated measures ANOVA within each ROI. See Table 1 for complete results. In both early visual cortex ($F [1,46] = 7.62 [p = 0.008]$, Fig. 3A) and fusiform gyrus ($F [1,46] = 7.14 [p = 0.01]$) we observed a main effect of age, with older adults exhibiting reduced ERS compared to younger adults. In inferior temporal cortex we observed a trial type \times hemisphere interaction ($F [1,46] = 3.25 [p = 0.05]$) driven by greater ERS for item lures and targets compared to thematic lures in the right hemisphere (p 's < 0.05), but not in left hemisphere (p 's > 0.05). No other main effects or interactions were significant in the foregoing ROIs (p 's > 0.05).

In lateral occipital cortex we observed a main effect of age ($F [1,46] = 4.67 [p = 0.04]$) with older adults exhibiting reduced ERS compared to younger adults, a main effect of trial type with higher ERS found for targets, and items lures compared to thematic lures (p 's < 0.05). We also observed a significant hemisphere \times trial type interaction effect ($F [1,46] = 3.39 [p = 0.04]$) where the interaction was driven by greater ERS for targets than thematic lures in the right ($t [47] = 3.48, p = 0.001$), but not left ($t [47] = 1.68, p = 0.10$),

hemisphere. Finally, lateral occipital cortex also exhibited a significant trial type \times age group interaction ($F (1,2) = 5.18 [p = 0.007]$), driven by reduced ERS in older compared to younger adults for targets ($t [45.82] = 2.77, p = 0.008$), and item lures ($t [45.55] = 2.04, p = 0.04$), but not thematic lures ($p > 0.05$; Fig. 3B).

Regarding medial temporal regions, in the posterior hippocampus we observed a main effect of age ($F [1,46] = 4.70 [p = 0.03]$) driven by reduced ERS for older compared to younger adults. Posterior hippocampus also exhibited a main effect of trial type where ERS was higher for item lures compared to thematic lures while there were no differences between targets and lures of either type. In the entorhinal cortex we observed a main effect of trial type where ERS was higher for item lures than targets and thematic lures (p 's < 0.05). No significant main effects or interactions were observed in the anterior hippocampus (all p 's > 0.05 ; Supplementary Table 2).

Since it is possible that age effects in ERS can be accounted for by a general reduction in neural similarity in older compared to younger adults (Hill et al., 2021), we investigated the effect of global ERS on age differences in single-item level ERS. To do so we repeated the above 2 (hemisphere: left, right) \times 3 (trial type: target, item lure, theme lure) \times 2 (age group: young, old) within-between repeated measures ANOVA while including global ERS as a covariate. When including the global ERS as a covariate in the analysis, the main effect of age in early visual cortex, lateral occipital cortex, fusiform gyrus, and posterior hippocampus became nonsignificant (all p 's > 0.05). The only significant age interaction to remain was the trial type \times age group interaction in lateral occipital cortex ($F (1,2) = 5.18 [p = 0.007]$) reflecting greater ERS for targets and item lures in younger compared to older adults.

To confirm significant findings and correct for the effect of false positives, we reconduted the above analyses while conducting permutation testing. Specifically, we repeatedly shuffled the data randomly, and reconduted our ANOVAs (Kherad-Pajouh & Renaud, 2015). We repeated this procedure 10,000 times for each ANOVA to build a null distribution to simulate the potential difference in means that could be obtained if our effects did not exist. We also incorporated a Benjamini-Hochberg correction of p -values into our permutation tests (Benjamini & Hochberg, 1995). We found no differences in significance after conducting permutation testing.

3.3. Individual differences between trial type ERS and false memories

To examine how ERS of targets and lures relates to false memories, for each region of interest that depicted a main effect of age we conducted a multiple linear regression in which the outcome was false memory rate, and predictors included target ERS, item lure ERS, thematic lure ERS, and their interactions with age group (see Table 2). As we did not observe any significant age \times trial type \times hemisphere interactions in the previous analysis, we collapsed ERS values across hemispheres. We first utilized perceptual false memory rates as the outcome variable. In early visual cortex, item lure ERS positively predicted perceptual false memory ($b [40] = 4.03, p = 0.02$; Fig. 3C). In lateral occipital cortex, we observed a significant age group \times item lure interaction ($b [40] = 1.12, p = 0.02$; Fig. 3C), such that item lure ERS marginally negatively predicted perceptual false memory rates in older ($b [21] = -0.35, p = 0.06$), but not younger adults ($b [23] = 0.05, p > 0.05$). No ERS variables predicted perceptual false memory rates in the posterior hippocampus (p 's > 0.05). We next reconduted the above multiple linear regression analyses using thematic false memory rates as the outcome variable. In early occipital cortex, item lure ERS positively predicted thematic false memory rates ($b [40] = 0.62, p = 0.005$) while thematic lure ERS

Table 1

Results for the 2 (hemisphere: left, right) x 2 (age group: young, older) x 3 (ERS comparison: target-target, target-item lure, target-thematic lure) mixed-factors ANOVA per ROI

	df	F	p		df	F	p
ROI: Early Visual				ROI: Lateral Occipital			
Hemisphere	1, 46	0.39	0.54	Hemisphere	1, 46	1.9	0.17
Hemisphere x Age Group	1, 46	1.55	0.22	Hemisphere x Age Group	1, 46	0.74	0.39
Trial Type	1, 46	2.63	0.08	Trial Type ^a	1, 46	8.08	0.001
Trial Type x Age Group	1, 46	2.36	0.1	Trial Type x Age Group ^a	1, 46	5.18	0.007
Hemisphere x Trial Type	1, 46	0.21	0.81	Hemisphere x Trial Type ^a	1, 46	3.39	0.04
Hemisphere x Trial Type x Age Group	1, 46	1.01	0.34	Hemisphere x Trial Type x Age Group	1, 46	0.49	0.61
Age Group ^a	1, 46	7.62	0.008	Age Group ^a	1, 46	4.68	0.04
ROI: Fusiform				ROI: Inferior Temporal Cortex			
Hemisphere	1, 46	1.64	0.21	Hemisphere	1, 46	1.14	0.29
Hemisphere x Age Group	1, 46	1.19	0.28	Hemisphere x Age Group	1, 46	3.77	0.06
Trial Type	1, 46	2.76	0.07	Trial Type	1, 46	2.84	0.06
Trial Type x Age Group	1, 46	0.76	0.47	Trial Type x Age Group	1, 46	0.44	0.65
Hemisphere x Trial Type	1, 46	0.4	0.67	Hemisphere x Trial Type ^a	1, 46	3.25	0.05
Hemisphere x Trial Type x Age Group	1, 46	0.47	0.62	Hemisphere x Trial Type x Age Group	1, 46	0.96	0.39
Age Group ^a	1, 46	7.14	0.01	Age Group	1, 46	3.3	0.08
ROI: Posterior Hippocampus				ROI: Anterior Hippocampus			
Hemisphere	1, 46	0.15	0.67	Hemisphere	1, 46	1.59	0.21
Hemisphere x Age Group	1, 46	0.71	0.4	Hemisphere x Age Group	1, 46	0.09	0.77
Trial Type ^a	1, 46	3.89	0.02	Trial Type	1, 46	1.92	0.15
Trial Type x Age Group	1, 46	0.52	0.6	Trial Type x Age Group	1, 46	0.71	0.49
Hemisphere x Trial Type	1, 46	0.01	0.96	Hemisphere x Trial Type	1, 46	0.38	0.68
Hemisphere x Trial Type x Age Group	1, 46	0.02	0.96	Hemisphere x Trial Type x Age Group	1, 46	1.52	0.22
Age Group ^a	1, 46	4.7	0.03	Age Group	1, 46	0.02	0.89
ROI: Entorhinal Cortex							
Hemisphere	1, 46	0.06	0.8				
Hemisphere x Age Group	1, 46	0.09	0.76				
Trial Type ^a	1, 46	4.58	0.01				
Trial Type x Age Group	1, 46	2.45	0.09				
Hemisphere x Trial Type	1, 46	1.63	0.2				
Hemisphere x Trial Type x Age Group	1, 46	1.57	0.21				
Age Group	1, 46	0.03	0.87				

^a indicates $p < 0.05$

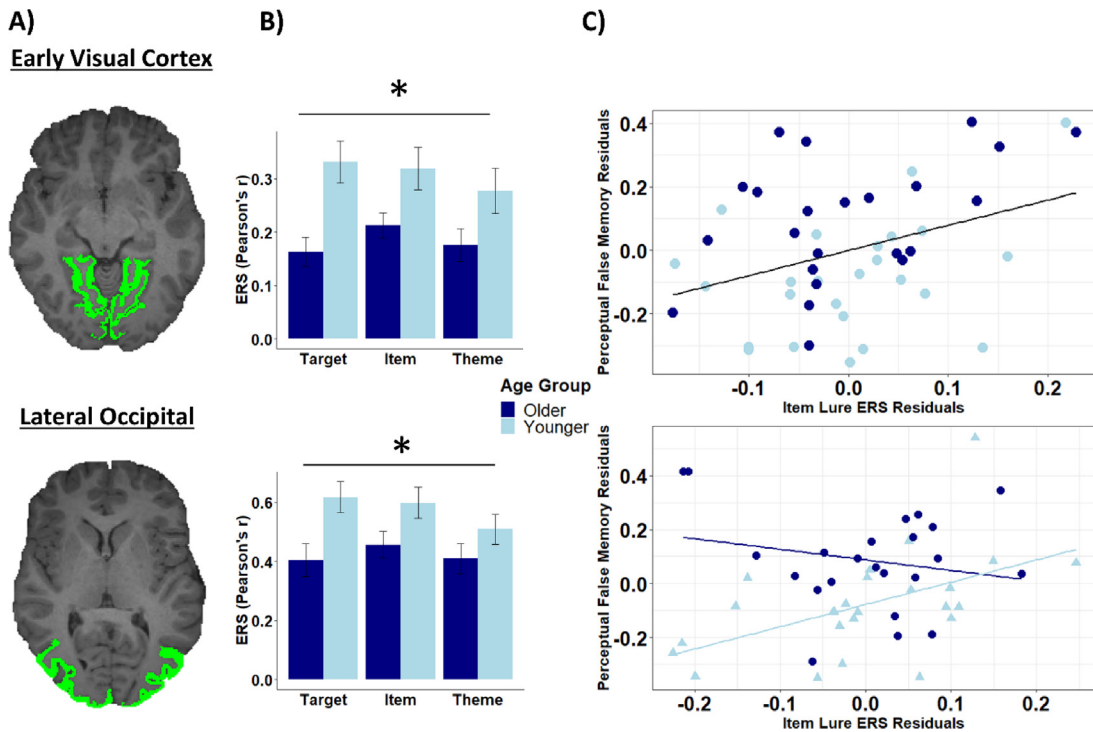


Fig. 3. Visual cortex ERS and relationships with behavior. (A) Early visual and lateral occipital cortex ROIs depicted in a representative participant. (B) We observed age deficits in ERS throughout portions the ventral visual stream. * indicates age effect $p < 0.05$. (C) Item Lure ERS positively predicted false memory rates regardless of age in early visual cortex, while the relationship between item lure ERS, and false memory rates was moderated by age in lateral occipital cortex.

negatively predicted thematic false memory rates ($b [40] = -0.56, p = 0.005$). In posterior hippocampus, thematic lure ERS marginally negatively predicted thematic false memory rates ($b [40] = -0.56, p = 0.06$), and this effect became significant after controlling for global ERS ($b [40] = -0.66, p = 0.03$). No ERS variables predicted thematic false memory rates in the lateral occipital cortex (p 's > 0.05 ; Supplementary Table 3). Finally, at the helpful suggestion of a reviewer, we examined the role of frontally-dependent monitoring processes in the context of recall-to-reject by examining possible correlations between item-lure ERS in superior frontal gyrus and lateral occipital cortex, and between item-lure ERS in superior frontal gyrus and item lure false memory rates (Kurkela & Dennis, 2016). We observed a positive correlation where participants who exhibited increased levels of item-lure ERS in the superior frontal gyrus also tended to exhibit increased levels of item-lure ERS in the lateral occipital cortex ($r = 0.44, p = 0.001$), however we failed to observe a relationship between superior frontal gyrus item-lure ERS, and item lure false memory rates ($r = -0.09, p > 0.05$).

We also examined the influence of global ERS in predicting perceptual and thematic false memory rates. To do so we repeated the above multiple linear regressions while including global ERS as a predictor (see Supplementary Table 2). When accounting for global ERS, item lure ERS still positively predicted perceptual false memory rate in early visual cortex ($b [39] = 1.04, p = 0.02$). In lateral occipital cortex, the significant age group \times item lure ERS interaction predicting perceptual false memory rates also remained significant ($b [39] = 1.12, p = 0.03$), such that item lure ERS negatively predicted false memory rates in older adults but not younger adults. Regarding thematic false memory rates, in early visual cortex both item lure ($b [39] = 0.62, p = 0.005$) and thematic lure ERS ($b [39] = -0.53, p = 0.01$) still predicted thematic false memories. Finally, in posterior hippocampus, thematic lure ERS negatively predicted thematic false memory rates ($b [39] = -0.66, p = 0.03$) after controlling for global ERS. Critically, however, global ERS did not significantly predict false memory rates in any of the aforementioned regions (all p 's > 0.05). We also examined potential multicollinearity among our predictors in the aforementioned regression analyses. Any predictor with a variance inflation factor (VIF) of greater than or equal to 10 was removed and regression analyses were reconducted. We found no differences in significance after examining multicollinearity. Collectively, we observed that perceptual-lure ERS contributes to perceptual false memories in early visual and lateral occipital cortex, and that thematic-lure ERS contributes to thematic false memories in early visual cortex and hippocampus.

Like above, we reconducted the above analyses while conducting permutation testing to confirm the significant findings, and correct for the effect of false positives. Specifically, we repeatedly shuffled the data randomly and reconducted our multiple linear regression analyses while incorporating a Benjamini Hochberg correction of p -values (Winkler et al., 2014). We repeated this procedure 10,000 times for each regression model to build a null distribution to simulate the potential relationship between false memories and ERS if our effects did not exist. We found no differences in significance after conducting permutation testing.

4. Discussion

The current study investigated potential age differences in ERS associated with memory for targets, item lures, and thematic lures, and how these age differences contribute to false memory rates in younger and older adults. Our results showed an overall age deficit in ERS across all three trial types of interest within ROIs in portions of the visual system and hippocampus. We also observed that

ERS within these regions was behaviorally relevant to false memory differentially in younger and older adults. Specifically, single-item ERS within early visual cortex and posterior hippocampus contributed to domain-specific false memory rates across the entirety of our sample, and ERS in lateral occipital cortex predicted false memory rates within older adults alone. Finally, we found that global ERS, as measured by neural similarity between all items at retrieval and encoding, accounted for age deficits in single-item ERS in occipital and hippocampal regions, but could not account for the relationship between ERS and false memories in aging. Rather, only single-item ERS contributed to false memory rates. We discuss these findings further below.

4.1. Age deficits in ERS

Recent work suggests that the similarity between patterns of neural activity across memory phases is a critical indicator of both veridical and false memories (Ritchey et al., 2013; Wheeler & Buckner, 2004; Ye et al., 2016). Such similarity is thought to reflect the recapitulation of sensory signals related to the studied items and components of memory processing such as basic perceptual features including item color, orientation, and size. It is theorized that greater recapitulation of this information between encoding and retrieval will result in higher rates of true, or false, memories depending on the stimulus or memory signal being recapitulated. It is also speculated that age differences in this recapitulation are an underlying mechanism contributing to age-related memory impairments (Brainerd & Reyna, 2002; Dennis & Turney, 2018). Our findings showed age deficits in ERS throughout portions of the ventral visual cortex and hippocampus. Specifically, ROIs within bilateral early visual cortex, lateral occipital cortex, fusiform gyrus, and posterior hippocampus showed reduced similarity of neural patterns of activation across memory phases in older compared to younger adults. Critically, this reduction was associated not only with the need to identify previously viewed stimuli as “old” (target-target ERS), but also the need to recapitulate target related details in order to correctly identify novel stimuli as “new” (target-item lure and target-theme lure ERS).

The notion of sensory reactivation in memory is a long-standing theory (Damasio, 1989; James & Burkhardt, 1983; Kosslyn, 1994) that is supported by univariate findings showing that neural activity is greater at retrieval for remembered compared to forgotten memories (Baym & Gonsalves, 2010; Vaidya et al., 2002; Wheeler et al., 2000). Additionally, a consistent finding in aging and memory research is that older, compared to younger, adults exhibit reduced activity in visual cortices associated with such memory success (Dennis et al., 2008; Devitt & Schacter, 2016; Gutchess & Schacter, 2012). These age-related reductions in neural activity within the visual cortex, coupled with age-deficits in recollection (Dennis et al., 2012; McCabe et al., 2009) has led to the conclusion that older adults do not retrieve sensory details related to the original memory episode as often or as vividly as do young adults. The observed age-related reduction in ERS within both the occipital cortex and hippocampus supports and extends this corpus of univariate findings with greater specificity. Specifically, our results suggest that, compared to younger adults, older adults exhibit a significant reduction in the recapitulation of neural activation patterns between the encoding of a visual stimulus and the retrieval of the same or related stimulus. That is, age reductions in ERS were found not only for target objects, but also for item and category lure stimuli.

While ERS does not provide details about what information, specifically, is being processed at encoding and retrieval, age-related reductions in ERS may be suggestive of a number of underlying information processing deficits in older adults. Reduced

neural recapitulation in sensory cortices is likely a reflection of impaired reactivation of perceptual details, as predicted by the sensory reactivation hypothesis (Slotnick & Schacter, 2004). For example, it is possible that older adults do not store, and thus do not have available as many or as high-quality, encoding-related details for retrieval compared to their younger counterparts (Dennis, Bowman, et al., 2014; Hill et al., 2021). It is also possible that older adults have such details stored in their memory, but fail to reactivate these memory traces at the time of retrieval (Folville et al., 2019; Trelle et al., 2020; Naspi et al., 2021). Either possibility would result in overall reduced similarity between neural patterns within occipital cortices across encoding and retrieval. Recent work from Hill et al. (2021) provides evidence for the former explanation, as age deficits in neural reinstatement became nonsignificant after controlling for the distinctiveness of neural patterns in visual regions during encoding. Similarly, age deficits in single-item ERS within the current study became nonsignificant after controlling for global ERS, capturing the neural pattern similarity of all items viewed at encoding (see below for more discussion on global ERS deficits and relation to behavior). Such results suggest that older adults exhibit reduced pattern similarity at multiple levels, and potentially at multiple stages of memory processing. Future work should examine how reduced ERS in older adults is reflective of retrieval processing failures.

Interestingly, within the current results was the finding that the age-reduction in single-item ERS was consistent across both target and lure conditions. While the need to retrieve encoding-related details and recapitulate encoding processes in support of veridical memory recognition is important, veridical memory endorsement in recognition tasks can be based on retrieval of gist-level memory traces (Brainerd & Reyna, 2002), absent of retrieval for fine-grain details of past experiences. Thus, reduced ERS within regions supporting detailed perceptual representations of past episodes may not be a particular detriment to veridical retrieval if more general properties of the encoding episode are reinstated at retrieval. This is reflected in our lack of age deficits for target memory (i.e., hit rate). Yet, while accurate target identification can be supported in the absence of detail-level reinstatement, the accurate rejection of a perceptually related lure cannot. That is, if a novel object shares overlapping gist information with a target item, as in the case of perceptually related item-lures, there is a direct benefit to lure identification with recapitulation of item-related details. Age-related reductions in ERS between encoded targets and the presentation of perceptual lures at retrieval would contribute to higher false memory rates in older adults, especially if there was no reduction in ERS of gist representations, or if older adults do not re-engage the same neural processes.

With regard the association between ERS and behavior, we observed evidence that older adults who demonstrated greater item lure ERS in lateral occipital cortex exhibited lower rates of false memories. That is, to the extent that older adults were able to recapitulate the original pattern of lateral occipital cortex activation associated with encoding of a target while viewing a perceptual lure, they were able to reduce false memories for the lure. Unlike early visual cortex, which is associated with more detailed item processing, the LOC is associated with the multisensory representations of object shape and similarity amongst object properties and object recognition (Erdogan et al., 2016; Grill-Spector et al., 2001; Kourtzi & Kanwisher, 2000). In perceptual relatedness memory studies, activity in late visual cortex, including LOC, has been linked to memory for general object properties (Dennis et al., 2014; Garoff et al., 2005; Slotnick and Schacter, 2004). As such, this region has more often been associated with retrieval of semantic labeling related to the acceptance of lure items within false memory work (Slotnick & Schacter, 2004). From this functional perspective,

it is counterintuitive that greater ERS in LOC would lead to reduced false memories. However, this ability to reject the item lure in the presence of higher recapitulation of encoding activity is in line with the use of a recall to reject strategy (Jacoby, 1999; Jennings & Jacoby, 1997). While older adults may have reduced recall-to-reject capabilities overall (Gallo et al., 2006), research denotes their ability to successfully execute this retrieval strategy including neural processing linked to this strategy (Fandakova et al., 2015). This recall-to-reject processing in older adults is also supported by previous univariate neuroimaging work from our group finding older adults preferentially recruit late visual cortical regions when correctly rejecting lure items (Bowman & Dennis, 2015). An alternative, yet not mutually exclusive, perspective is that later visual regions are engaged in pattern separation processes that would lead to successfully identifying, and rejecting related lure objects. Recent univariate neuroimaging work utilizing the mnemonic similarity task (Stark et al., 2019) has found that late visual regions, including LOC, are engaged when deciding that related lures are new or similar to objects viewed during encoding (Klappenstein et al., 2020; Nash et al., 2021). To this point, it is hypothesized that visual processing regions assist in developing novel representations that the hippocampus can then discriminate (Rolls, 2016). Given that the hippocampus is especially susceptible to age-related structural and functional decline, the LOC may play a more outsized role in discriminating between perceptually-related mnemonic representations in later adulthood. As this relationship was present for older and not younger adults, it is possible that a shift occurs in healthy aging regarding the content of information recapitulated between encoding and retrieval, where recapitulation of neural patterns within late visual regions becomes relevant for rejecting perceptual lure items within older adults (Bowman et al., 2019).

We also observed that individuals who exhibited greater item lure ERS in the early visual cortex also tended to exhibit increased rates of false memories, regardless of age. Early visual regions have been found to be associated with recapitulating sensory signals experienced at encoding during retrieval (Buckner & Wheeler, 2001; Rugg & Wilding, 2000; Vaidya et al., 2002). While older adults exhibit increased false memories compared to younger adults, and reduced ERS associated with retrieval related to both target and lure processing, the manner in which ERS in early visual cortex contributes to false memory behavior is unaltered by age, only reduced (Koen & Rugg, 2019). That is, participants who recapitulate visual information associated with the encoded item to a greater degree in the presence of the perceptual lure are more likely to falsely endorse the lure item (Slotnick & Schacter, 2006). This stands in contrast to our results in the lateral occipital cortex where we observed that only older adults exhibited a negative relationship between item-lure ERS and false memory rates in tandem with an age-related reduction in ERS. Our regression moderation suggests that a shift may occur with increasing age regarding the content of information shared between encoded items and lure items maintained across memory phases (Bowman et al., 2019). It may be that the relationship between item lure ERS and false memories in lateral occipital cortex may be late emerging in later adulthood, only becoming behaviorally relevant with advanced age. Collectively, such findings highlight the subtle role of how regions within visual cortex differentially contribute to the commission and rejection of false memories, and how ERS within such visual regions is impacted by age.

In addition to age-related reductions in ERS within the visual cortex, reductions were also observed within portions of the hippocampus. Notably, we found an overall age deficit in ERS in posterior hippocampus. This finding is consistent with previous work by Abdulrahman et al. (2017), who interpreted reduced reinstatement

effects in the hippocampi of older compared to younger adults as reflective of dedifferentiation of neural patterns associated with pattern separation and completion processes. Furthermore, within this region, thematic lure ERS negatively contributed to thematic false memories across both younger and older adults within our sample (although this finding became marginal after controlling for global ERS). A large body of literature implicates the hippocampus, and specifically dentate gyrus within the hippocampus, in pattern separation processes (Brock Kirwan et al., 2012; Yassa et al., 2011; Yassa & Stark, 2011). Here we find that although older adults exhibit reduced ERS in posterior hippocampus across all memory conditions, participants with increased thematic lure ERS demonstrated more correct rejections. This is likely indicative of semantic feature processing utilized for pattern separation, as research in young adults suggest participants often reject lure items of greater conceptual (as opposed to perceptual) confusability in a mnemonic similarity task (Naspi et al., 2021).

4.2. Global ERS

In addition to calculating single-item ERS, we also calculated a global ERS metric within each ROI to account for group differences in baseline similarity between encoding, and retrieval in our analyses (Ye et al., 2016). As a follow up to the single-item ERS analysis, we found that differences in global ERS accounted for observed age deficits in ERS in portions of the visual cortex and posterior hippocampus, but did not contribute to behavioral measures of false memory rates in any region. Such findings suggest that age deficits in ERS occur at multiple levels, including the single-item (i.e., “the similarity between a specific dog at retrieval and a specific dog at encoding”) as well as a more holistic (i.e., “the similarity between everything one is seeing at retrieval and everything one has seen at encoding”) level. It is also possible that age deficits in ERS also occur at an intermediate category or gist-level. While the current design precludes such an analysis, future work could examine at just what levels such age-related deficits occur. Further, this information may be useful to investigators who wish to investigate age-related reductions in ERS, but whose designs do not allow for the examination of ERS at the single-item level, such as when a lure at retrieval is related to multiple exemplars viewed during encoding. Finally, with regard to the effect of global ERS on item-level ERS, a recent report observed a similar effect when examining neural distinctiveness during encoding at the single-item and global level (Kobelt et al., 2021). While older adults exhibited reduced neural distinctiveness at both the single-item and global level, only neural distinctiveness of the item level predicted veridical memory rates (Kobelt et al., 2021). Taken together, results highlight the importance of item-level ERS in explaining the age-related increase in false memory rates in older compared to younger adults.

As noted above, while global ERS was able to account for variance in age differences with regard to single-item ERS, global ERS did not fully account for the relationship between ERS, and behavior. That is, even when including global ERS as a covariate in the regression models, it was the single-item ERS that contributed to false memory rates in lateral occipital cortex, early visual cortex, and posterior hippocampus. Such findings highlight how direct correspondence of neural patterns associated with single items (i.e., a specific stimulus at encoding and its corresponding stimulus at retrieval) is predictive of false memory above and beyond a holistic measure of neural correspondence between memory phases.

4.3. Trial type effects

Irrespective of age, we observed trial type effects within our ERS analysis throughout the visual system and portions of the

medial temporal lobe. Specifically, ERS was greater for targets compared to either lure condition in lateral occipital cortex. This difference is likely reflective of greater sensory recapitulation in response to previously seen items when that item is being viewed than when any related item is presented (Slotnick et al., 2012). Such greater ERS could be triggered by the actual details inherent within the target item as opposed to the absence of such details in lure items. In contrast to greater target ERS in sensory regions, comparatively greater ERS for item lures was observed in MTL regions including posterior hippocampus and entorhinal cortex. This pattern of ERS could be reflective of neural responses to specific cues within the lure item that triggers the need to retrieve details of the target item. Specifically, Robin & Moscovitch (2017) hypothesize that posterior hippocampus, and entorhinal cortex are involved collaboratively in elaboration processes during retrieval in response to cues. Relatedly, patient lesion studies suggest that entorhinal cortex is involved in familiarity processes associated with false memory (Brandt et al., 2018). In conjunction with work by Robin & Moscovitch, participants potentially recapitulate neural patterns associated with familiarity when presented with specific perceptual cues (i.e., a dog similar to one viewed previously), and that such information is modulated within entorhinal cortex. Finally, regarding greater item lure ERS in posterior hippocampus, a recent meta-analysis suggests that posterior hippocampus is preferentially activated while integrating fine-grained representations as opposed to coarse-grained representations during episodic retrieval (Grady, 2020). Perceptually similar stimuli, such as the item lures used in the current study, likely require recapitulation of fine-grained information within posterior hippocampus to assist in pattern separation processes. This interpretation is supported by a recent study (Bone & Buchsbaum, 2021) that observed that posterior hippocampus and visual cortex concurrently recapitulate fine-grained visual features during episodic memory processes. Future work with high-resolution neuroimaging will assist in understanding how the components of the hippocampus and medial temporal lobe differentially recapitulate neural patterns associated with false recognition.

4.4. Limitations and future directions

The current study has several limitations that should be considered. First, our study is correlational in nature so we cannot claim increased ERS for lure items causes increases in false memories, only that the two constructs are related. Second, by using a cross sectional sample we cannot examine age-related changes in ERS, only differences between younger and older adults. Longitudinal studies will assist in elucidating how the relationship between ERS and memory errors is altered by increasing age. Third, due to the current study design, every item viewed during encoding is its own perceptual category. We are therefore unable to calculate neural distinctiveness during encoding to use as a baseline neural similarity measure, as recent studies have with face and house categories of visual stimuli (Hill et al., 2021; Kobelt et al., 2021). However, we contend that global ERS is an appropriate and theoretically meaningful baseline assessment of recapitulation between younger and older adults when assessing single-item ERS. The current study utilized object images at both encoding and retrieval, however prior reports have used blank screens at retrieval with a cue to tap more specifically into mnemonic processes. While such an approach precludes the examination of perceptual lures, it is possible that ERS related to lures may show differential age-related deficits without perceptual items viewed during retrieval. While we positioned the field of view to ensure full coverage of medial temporal regions in our sample, it is possible that any differences in ERS could be

attributed to reduced SNR in older adults compared to younger adults.

Regarding future directions, recent work suggests that applying excitatory transcranial magnetic stimulation to dorsolateral prefrontal cortex increases pattern similarity in visual cortex during encoding and retrieval, as well as single-item ERS in the hippocampus in younger adults during an episodic memory task (Wang et al., 2018). An exciting avenue for future research is therefore to examine whether such TMS application increases ERS in older adults, and if ERS increases are associated with alterations in false memory rates. Furthermore, it remains to be seen how cognitive training regimens may alter ERS in older adults alongside beneficial changes in memory performance.

5. Conclusions

In conclusion, the current study investigated age-related deficits of ERS associated with target and lure items, and how such deficits relate to false memory rates. We observed age-related reductions in ERS throughout the ventral visual stream as well as in portions of the hippocampus. Age deficits in global ERS accounted for single-item ERS age reductions, however only single-item ERS predicted individual differences in false memory rates. Such results carry implications regarding age deficits of neural patterns across memory phases, and how such neural similarity is related to memory errors of commission. Specifically, they suggest recapitulation of lure information within occipital regions is utilized to both false alarm to, and correctly reject, previously unseen items. Future longitudinal and intervention work will assist in deepening our understanding regarding how ERS changes with age, and how to ameliorate age-related memory errors in older adults.

Funding

Funding was provided by grants from the National Science Foundation to NAD (BCS1025709; BCS2000047).

Conflict of interests

The authors declare no competing financial interests.

Acknowledgements

We thank the Penn State Social, Life, & Engineering Sciences Imaging Center (SLEIC), 3T MRI Facility. This work was supported by a National Science Foundation grant BCS1025709 and BCS2000047 awarded to NAD. It was also supported by dissertation awards granted by the American Psychological Association and Penn State's Research and Graduate Studies Office to CRB.

Supplementary materials

Supplementary material associated with this article can be found, in the online version, at doi:10.1016/j.neurobiolaging.2022.01.011.

CRedit authorship contribution statement

Jordan D. Chamberlain: Methodology, Conceptualization, Software, Validation, Formal analysis, Writing – original draft, Writing – review & editing, Visualization. **Caitlin R. Bowman:** Conceptualization, Software, Validation, Writing – review & editing, Investigation, Data curation, Project administration, Supervision. **Nancy A. Dennis:** Conceptualization, Validation, Supervision, Writing – original draft, Writing – review & editing, Project administration, Resources, Funding acquisition.

References

- Abdulrahman, H., Fletcher, P.C., Bullmore, E., Morcom, A.M., 2017. Dopamine and memory dedifferentiation in aging. *NeuroImage* 153, 211–220. doi:10.1016/j.neuroimage.2015.03.031.
- Abdulrahman, H., Henson, R.N., 2016. Effect of trial-to-trial variability on optimal event-related fMRI design: implications for beta-series correlation and multi-voxel pattern analysis. *NeuroImage* 125, 756–766. doi:10.1016/j.neuroimage.2015.11.009.
- Arndt, J., Hirshman, E., 1998. True and false recognition in MINERVA2: explanations from a global matching perspective. *J Mem Lang* 39 (3), 371–391. doi:10.1006/jmla.1998.2581.
- Balota, D.A., Cortese, M.J., Duchek, J.M., Adams, D., III, H.L.R., McDermott, K.B., Yerys, B.E., 1999. Veridical and false memories in healthy older adults and in dementia of the Alzheimer's type. *Cogn Neuropsychol* 16 (3–5), 361–384. doi:10.1080/026432999380834.
- Baym, C.L., Gonsalves, B.D., 2010. Comparison of neural activity that leads to true memories, false memories, and forgetting: an fMRI study of the misinformation effect. *Cogn Affect Behav Neurosci* 10 (3), 339–348. doi:10.3758/CABN.10.3.339.
- Benjamini, Y., Hochberg, Y., 1995. Controlling the false discovery rate: a practical and powerful approach to multiple testing. *J R Stat Soc Series B Stat Methodol* 57 (1), 289–300. doi:10.1111/j.2517-6161.1995.tb02031.x.
- Bone, M.B., Buchsbaum, B.R., 2021. Detailed episodic memory depends on concurrent reactivation of basic visual features within the posterior hippocampus and early visual cortex. *Cereb Cortex Commun* 2 (3). doi:10.1093/texcom/tgab045.
- Bowman, C.R., Chamberlain, J.D., Dennis, N.A., 2019. Sensory representations supporting memory specificity: age effects on behavioral and neural discriminability. *J Neurosci* 39 (12), 2265–2275. doi:10.1523/JNEUROSCI.2022-18.2019.
- Bowman, C.R., Dennis, N.A., 2015. Age differences in the neural correlates of novelty processing: the effects of item-relatedness. *Brain Res* 1612, 2–15. doi:10.1016/j.brainres.2014.08.006.
- Bowman, C.R., Dennis, N.A., 2016. The neural basis of recollection rejection: increases in hippocampal–prefrontal connectivity in the absence of a shared recall-to-reject and target recollection network. *J Cogn Neurosci* 26 (3), 1–16. doi:10.1162/jocn_a.00961.
- Bowman, C.R., Sine, S.L., Dennis, N.A., 2017. Modulation of target recollection and recollection rejection networks due to retrieval facilitation and interference. *Learn Mem* 24 (11), 607–611. doi:10.1101/lm.045435.117.
- Bowman, C.R., Zeithamova, D., 2018. Abstract memory representations in the ventromedial prefrontal cortex and hippocampus support concept generalization. *J Neurosci* 38 (10), 2605–2614.
- Brainerd, C.J., Reyna, V.F., 2002. Fuzzy-trace theory and false memory. *Curr Dir Psychol Sci* 11 (5), 164–169. doi:10.1111/1467-8721.00192.
- Brandt, K.R., Conway, M.A., James, A., von Oertzen, T.J., 2018. Déjà vu and the entorhinal cortex: dissociating recollective from familiarity disruptions in a single case patient. *Memory (Hove, England)* 1–10. doi:10.1080/09658211.2018.1543436.
- Brock Kirwan, C., Hartshorn, A., Stark, S.M., Goodrich-Hunsaker, N.J., Hopkins, R.O., Stark, C.E.L., 2012. Pattern separation deficits following damage to the hippocampus. *Neuropsychologia* 50 (10), 2408–2414. doi:10.1016/j.neuropsychologia.2012.06.011.
- Brodeur, M.B., Dionne-Dostie, E., Montreuil, T., Lepage, M., 2010. The bank of standardized stimuli (BOSS), a new set of 480 normative photos of objects to be used as visual stimuli in cognitive research. *PLoS ONE* 5 (5). doi:10.1371/journal.pone.0010773.
- Buckner, R.L., Wheeler, M.E., 2001. The cognitive neuroscience of remembering. *Nat Rev Neurosci* 2 (9), 624–634. doi:10.1038/35090048.
- Bulevich, J.B., Thomas, A.K., 2012. Retrieval effort improves memory and metamemory in the face of misinformation. *J Mem Lang* 67 (1), 45–58. doi:10.1016/j.jml.2011.12.012.
- Castel, A.D., Craik, F.I.M., 2003. The effects of aging and divided attention on memory for item and associative information. *Psychol Aging* 18 (4), 873–885. doi:10.1037/0882-7974.18.4.873.
- Chadwick, M.J., Anjum, R.S., Kumaran, D., Schacter, D.L., Spiers, H.J., Hassabis, D., 2016. Semantic representations in the temporal pole predict false memories. *Proc Natl Acad Sci*, 201610686 doi:10.1073/pnas.1610686113.
- Cohn, M., Emrich, S.M., Moscovitch, M., 2008. Age-related deficits in associative memory: the influence of impaired strategic retrieval. *Psychol Aging* 23 (1), 93–103. doi:10.1037/0882-7974.23.1.93.
- Dale, A.M., 1999. Optimal experimental design for event-related fMRI. *Hum Brain Mapp* 8 (2–3), 109–114. doi:10.1002/(SICI)1097-0193(1999)8:2/3<109::AID-HBM7>3.0.CO;2-W.
- Damasio, A.R., 1989. Time-locked multiregional retroactivation: a systems-level proposal for the neural substrates of recall and recognition. *Cognition* 33 (1), 25–62. doi:10.1016/0010-0277(89)90005-X.
- Daselaar, Fleck, M.S., Cabeza, R., 2006. Triple dissociation in the medial temporal lobes: recollection, familiarity, and novelty. *Journal of Neurophysiology* 96 (4), 1902–1911. doi:10.1152/jn.01029.2005.
- Deng, L., Davis, S.W., Monge, Z.A., Wing, E.A., Geib, B.R., Raghunandan, A., Cabeza, R., 2021. Age-related dedifferentiation and hyperdifferentiation of perceptual and mnemonic representations. *Neurobiol Aging* 106, 55–67. doi:10.1016/j.neurobiolaging.2021.05.021.
- Dennis, N.A., Bowman, C.R., Peterson, K.M., 2014. Age-related differences in the neural correlates mediating false recollection. *Neurobiol Aging* 35 (2), 395–407.

- Dennis, N.A., Bowman, C.R., Vandekar, S.N., 2012. True and phantom recollection: an fMRI investigation of similar and distinct neural correlates and connectivity. *NeuroImage* 59 (3), 2982–2993. doi:[10.1016/j.neuroimage.2011.09.079](https://doi.org/10.1016/j.neuroimage.2011.09.079).
- Dennis, N.A., Johnson, C.E., Peterson, K.M., 2014. Neural correlates underlying true and false associative memories. *Brain Cogn* 88, 65–72. doi:[10.1016/j.bandc.2014.04.009](https://doi.org/10.1016/j.bandc.2014.04.009).
- Dennis, N.A., Kim, H., Cabeza, R., 2008. Age-related differences in brain activity during true and false memory retrieval. *J Cogn Neurosci* 20 (8), 1390–1402.
- Dennis, N.A., Turney, I.C., 2018. The influence of perceptual similarity and individual differences on false memories in aging. *Neurobiol Aging* 62, 221–230. doi:[10.1016/j.neurobiolaging.2017.10.020](https://doi.org/10.1016/j.neurobiolaging.2017.10.020).
- Devitt, A.L., Schacter, D.L., 2016. False memories with age: neural and cognitive underpinnings. *Neuropsychologia* 91, 346–359. doi:[10.1016/j.neuropsychologia.2016.08.030](https://doi.org/10.1016/j.neuropsychologia.2016.08.030).
- Erdogan, G., Chen, Q., Garcea, F.E., Mahon, B.Z., Jacobs, R.A., 2016. Multisensory part-based representations of objects in human lateral occipital cortex. *J Cogn Neurosci* 28 (6), 869–881. doi:[10.1162/jocn_a_00937](https://doi.org/10.1162/jocn_a_00937).
- Fandakova, Y., Lindenberger, U., Shing, Y.L., 2015. Maintenance of youth-like processing protects against false memory in later adulthood. *Neurobiol Aging* 36 (2), 933–941. doi:[10.1016/j.neurobiolaging.2014.10.022](https://doi.org/10.1016/j.neurobiolaging.2014.10.022).
- Folstein, M.F., Robins, L.N., Helzer, J.E., 1983. The mini-mental state examination. *Arch Gen Psychiatry* 40 (7), 12. doi:[10.1016/0022-3956\(75\)90026-6](https://doi.org/10.1016/0022-3956(75)90026-6).
- Folville, A., Bahri, M.A., Delhay, E., Salmon, E., D'Argembeau, A., Bastin, C., 2019. Age-related differences in the neural correlates of vivid remembering. *NeuroImage*, 116336 doi:[10.1016/j.neuroimage.2019.116336](https://doi.org/10.1016/j.neuroimage.2019.116336).
- Gallo, D.A., 2006. *Associative Illusions Of Memory: False Memory Research In DRM And Related Tasks* (pp. xii, 289). Psychology Press, New York, USA, pp. 1–289.
- Gallo, D.A., Bell, D.M., Beier, J.S., Schacter, D.L., 2006. Two types of recollection-based monitoring in younger and older adults: recall-to-reject and the distinctiveness heuristic. *Memory* 14 (6), 730–741. doi:[10.1080/09658210600648506](https://doi.org/10.1080/09658210600648506).
- Garoff-Eaton, R.J., Slotnick, S.D., Schacter, D.L., 2006. Not all false memories are created equal: the neural basis of false recognition. *Cerebral Cortex* 16 (11), 1645–1652. doi:[10.1093/cercor/bhj101](https://doi.org/10.1093/cercor/bhj101).
- Grady, C.L., 2020. Meta-analytic and functional connectivity evidence from functional magnetic resonance imaging for an anterior to posterior gradient of function along the hippocampal axis. *Hippocampus* 30 (5), 456–471. doi:[10.1002/hipo.23164](https://doi.org/10.1002/hipo.23164).
- Grill-Spector, K., Kourtzi, Z., Kanwisher, N., 2001. The lateral occipital complex and its role in object recognition. *Vision Research* 41 (10), 1409–1422. doi:[10.1016/S0042-6989\(01\)00073-6](https://doi.org/10.1016/S0042-6989(01)00073-6).
- Gutches, A.H., Schacter, D.L., 2012. The neural correlates of gist-based true and false recognition. *NeuroImage* 59 (4), 3418–3426. doi:[10.1016/j.neuroimage.2011.11.078](https://doi.org/10.1016/j.neuroimage.2011.11.078).
- Hashtroudi, S., Johnson, M. K., Chrosniak, L. D., 1990. Aging and qualitative characteristics of memories for perceived and imagined complex events. *Psychology and aging* 5 (1), 119.
- Hill, P.F., King, D.R., Rugg, M.D., 2021. Age differences in retrieval-related reinstatement reflect age-related dedifferentiation at encoding. *Cerebral Cortex* 31 (1), 106–122. doi:[10.1093/cercor/bhaa210](https://doi.org/10.1093/cercor/bhaa210).
- Jacoby, L.L., 1999. Ironic effects of repetition: measuring age-related differences in memory. *J Exp Psychol Learn Mem Cogn* 25 (1), 3–22. doi:[10.1037/0278-7393.25.1.3](https://doi.org/10.1037/0278-7393.25.1.3).
- James, W., Burkhardt, F.H., 1983. In: *The Principles of Psychology, the Works of William James*. Transactions of the Charles S. Peirce Society, London, pp. 211–223.
- Jennings, J.M., Jacoby, L.L., 1997. An opposition procedure for detecting age-related deficits in recollection: telling effects of repetition. *Psychol Aging* 12 (2), 352–361. doi:[10.1037/0882-7974.12.2.352](https://doi.org/10.1037/0882-7974.12.2.352).
- Kensinger, E.A., Schacter, D.L., 1999. When true memories suppress false memories: effects of ageing. *Cogn Neuropsychol* 16 (3–5), 399–415. doi:[10.1080/026432999380852](https://doi.org/10.1080/026432999380852).
- Kherad-Pajouh, S., Renaud, O., 2015. A general permutation approach for analyzing repeated measures ANOVA and mixed-model designs. *Statistical Papers* 56 (4), 947–967. doi:[10.1007/s00362-014-0617-3](https://doi.org/10.1007/s00362-014-0617-3).
- Klippenstein, J.L., Stark, S.M., Stark, C.E.L., Bennett, I.J., 2020. Neural substrates of mnemonic discrimination: a whole-brain fMRI investigation. *Brain Behav* 10 (3), e01560. doi:[10.1002/brb3.1560](https://doi.org/10.1002/brb3.1560).
- Kobelt, M., Sommer, V.R., Keresztes, A., Werkle-Bergner, M., Sander, M.C., 2021. Tracking age differences in neural distinctiveness across representational levels. *J Neurosci* 41 (15), 3499–3511. doi:[10.1523/JNEUROSCI.2038-20.2021](https://doi.org/10.1523/JNEUROSCI.2038-20.2021).
- Koen, J.D., Rugg, M.D., 2019. Neural dedifferentiation in the aging brain. *Trends Cogn Sci* 23 (7), 547–559. doi:[10.1016/j.tics.2019.04.012](https://doi.org/10.1016/j.tics.2019.04.012).
- Kosslyn, S.M., 1994. *Image And Brain: The Resolution of the Imagery Debate*, 1st A Bradford Book, Cambridge.
- Kourtzi, Z., Kanwisher, N., 2000. Cortical regions involved in perceiving object shape. *J Neurosci* 20 (9), 3310–3318. doi:[10.1523/JNEUROSCI.20-09-03310.2000](https://doi.org/10.1523/JNEUROSCI.20-09-03310.2000).
- Koutstaal, W., 2003. Older adults encode—but do not always use—perceptual details: intentional versus unintentional effects of detail on memory judgments. *Psychol Sci* 14 (2), 189–193. doi:[10.1111/1467-9280.01441](https://doi.org/10.1111/1467-9280.01441).
- Koutstaal, W., Schacter, D.L., 1997. Gist-based false recognition of pictures in older and younger adults. *J Mem Lang* 37 (4), 555–583. doi:[10.1006/jmla.1997.2529](https://doi.org/10.1006/jmla.1997.2529).
- Koutstaal, W., Wagner, A.D., Rotte, M., Maril, A., Buckner, R.L., Schacter, D.L., 2001. Perceptual specificity in visual object priming: functional magnetic resonance imaging evidence for a laterality difference in fusiform cortex. *Neuropsychologia* 39 (2), 184–199. doi:[10.1016/S0028-3932\(00\)00087-7](https://doi.org/10.1016/S0028-3932(00)00087-7).
- Kriegeskorte, N., Mur, M., Bandettini, P., 2008. Representational similarity analysis—Connecting the branches of systems neuroscience. In: *Frontiers in Systems Neuroscience*, 2, p. 4. doi:[10.3389/neuro.06.004.2008](https://doi.org/10.3389/neuro.06.004.2008).
- Kuhl, B.A., Rissman, J., Chun, M.M., Wagner, A.D., 2011. Fidelity of neural reactivation reveals competition between memories. *Proc Natl Acad Sci* 108 (14), 5903–5908.
- Kurkela, K.A., Dennis, N.A., 2016. Event-related fMRI studies of false memory: an activation likelihood estimation meta-analysis. *Neuropsychologia* 81, 149–167.
- Lee, H., Samide, R., Richter, F. R., Kuhl, B. A., 2019. Decomposing Parietal Memory Reactivation to Predict Consequences of Remembering. *Cerebral Cortex* 29 (8), 3305–3318. <https://doi.org/10.1093/cercor/bhy200>.
- Matzen, L.E., Taylor, E.G., Benjamin, A.S., 2011. Contributions of familiarity and recollection rejection to recognition: evidence from the time course of false recognition for semantic and conjunction lures. *Memory* 19 (1), 1–16. doi:[10.1080/09658211.2010.530271](https://doi.org/10.1080/09658211.2010.530271).
- McCabe, D.P., Roediger, H.L., McDaniel, M.A., Balota, D.A., 2009. Aging reduces veridical remembering but increases false remembering: neuropsychological test correlates of remember-know judgments. *Neuropsychologia* 47 (11), 2164–2173. doi:[10.1016/j.neuropsychologia.2008.11.025](https://doi.org/10.1016/j.neuropsychologia.2008.11.025).
- Mitchell, K.J., Ankudowich, E., Durbin, K.A., Greene, E.J., Johnson, M.K., 2013. Age-related differences in agenda-driven monitoring of format and task information. *Neuropsychologia* 51 (12), 2427–2441. doi:[10.1016/j.neuropsychologia.2013.01.012](https://doi.org/10.1016/j.neuropsychologia.2013.01.012).
- Multhaup, K.S., 1995. Aging, source, and decision criteria: When false fame errors do and do not occur. *Psychol Aging* doi:[10.1037/0882-7974.10.3.492](https://doi.org/10.1037/0882-7974.10.3.492).
- Nash, M.L., Hodges, C.B., Muncy, N.M., Kirwan, C.B., 2021. Pattern separation beyond the hippocampus: a high-resolution whole-brain investigation of mnemonic discrimination in healthy adults. *Hippocampus* 31 (4), 408–421. doi:[10.1002/hipo.23299](https://doi.org/10.1002/hipo.23299).
- Naspi, L., Hoffman, P., Devereux, B., Morcom, A., 2021. Perceptual and semantic representations at encoding contribute to true and false recognition of objects. *BioRxiv*, 437847 doi:[10.1101/2021.03.31.437847](https://doi.org/10.1101/2021.03.31.437847).
- Norman, K.A., Schacter, D.L., 1997. False recognition in younger and older adults: exploring the characteristics of illusory memories. *Mem Cognit* 25 (6), 838–848. doi:[10.3758/BF03211328](https://doi.org/10.3758/BF03211328).
- Paige, L.E., Cassidy, B.S., Schacter, D.L., Gutchess, A.H., 2016. Age differences in hippocampal activation during gist-based false recognition. *Neurobiol Aging* 46, 76–83. doi:[10.1016/j.neurobiolaging.2016.06.014](https://doi.org/10.1016/j.neurobiolaging.2016.06.014).
- Park, D.C., Puglisi, J.T., Sovacool, M., 1984. Picture memory in older adults: effects of contextual detail at encoding and retrieval. *J Gerontol* 39 (2), 213–215. doi:[10.1093/geronj/39.2.213](https://doi.org/10.1093/geronj/39.2.213).
- Pezdek, K., 1987. Memory for pictures: a life-span study of the role of visual detail. *Child Development* 58 (3), 807–815. doi:[10.2307/1130218](https://doi.org/10.2307/1130218).
- Rahhal, T.A., May, C.P., Hasher, L., 2002. Truth and character: sources that older adults can remember. *Psychol Sci* 13 (2), 101–105. doi:[10.1111/1467-9280.00419](https://doi.org/10.1111/1467-9280.00419).
- Ritchey, M., Wing, E.A., LaBar, K.S., Cabeza, R., 2013. Neural similarity between encoding and retrieval is related to memory via hippocampal interactions. *Cerebral Cortex* 23 (12), 2818–2828. doi:[10.1093/cercor/bhs258](https://doi.org/10.1093/cercor/bhs258).
- Robin, J., Moscovitch, M., 2017. Details, gist and schema: hippocampal-neocortical interactions underlying recent and remote episodic and spatial memory. *Curr Opin Behav Sci* 17, 114–123. doi:[10.1016/j.cobeha.2017.07.016](https://doi.org/10.1016/j.cobeha.2017.07.016).
- Rolls, E.T., 2016. Pattern separation, completion, and categorisation in the hippocampus and neocortex. *Neurobiol Learn Mem* 129, 4–28. doi:[10.1016/j.nlm.2015.07.008](https://doi.org/10.1016/j.nlm.2015.07.008).
- Rugg, M.D., Wilding, E.L., 2000. Retrieval processing and episodic memory. *Trends Cogn Sci* 4 (3), 108–115. doi:[10.1016/S1364-6613\(00\)01445-5](https://doi.org/10.1016/S1364-6613(00)01445-5).
- Schacter, D.L., Koutstaal, W., Norman, K.A., 1997. False memories and aging. *Trends Cogn Sci* 1 (6), 229–236. doi:[10.1016/S1364-6613\(97\)01068-1](https://doi.org/10.1016/S1364-6613(97)01068-1).
- Sheikh, J.I., Yesavage, J.A., 1986. Geriatric depression scale (GDS) recent evidence and development of a shorter version. *Clin Gerontol* 5 (1–2), 165–173. doi:[10.1300/J018v05n01_09](https://doi.org/10.1300/J018v05n01_09).
- Slotnick, S.D., Schacter, D.L., 2004. A sensory signature that distinguishes true from false memories. *Nat Neurosci* 7 (6), 664–672. doi:[10.1038/nn1252](https://doi.org/10.1038/nn1252).
- Slotnick, S.D., Schacter, D.L., 2006. The nature of memory related activity in early visual areas. *Neuropsychologia* 44 (14), 2874–2886. doi:[10.1016/j.neuropsychologia.2006.06.021](https://doi.org/10.1016/j.neuropsychologia.2006.06.021).
- Slotnick, S.D., Thompson, W.L., Kosslyn, S.M., 2012. Visual memory and visual mental imagery recruit common control and sensory regions of the brain. *Cogn Neurosci* 3 (1), 14–20. doi:[10.1080/17588928.2011.578210](https://doi.org/10.1080/17588928.2011.578210).
- Staresina, B.P., Henson, R.N.A., Kriegeskorte, N., Alink, A., 2012. Episodic reinstatement in the medial temporal lobe. *J Neurosci* 32 (50), 18150–18156. doi:[10.1523/JNEUROSCI.4156-12.2012](https://doi.org/10.1523/JNEUROSCI.4156-12.2012).
- Stark, S.M., Kirwan, C.B., Stark, C.E.L., 2019. Mnemonic similarity task: a tool for assessing hippocampal integrity. *Trends Cogn Sci* doi:[10.1016/j.tics.2019.08.003](https://doi.org/10.1016/j.tics.2019.08.003).
- Stark, S.M., Yassa, M.A., Lacy, J.W., Stark, C.E.L., 2013. A task to assess behavioral pattern separation (BPS) in humans: data from healthy aging and mild cognitive impairment. *Neuropsychologia* 51 (12), 2442–2449. doi:[10.1016/j.neuropsychologia.2012.12.014](https://doi.org/10.1016/j.neuropsychologia.2012.12.014).
- Trelle, A.N., Carr, V.A., Guerin, S.A., Thieu, M.K., Jayakumar, M., Guo, W., Nadiadwala, A., Corso, N.K., Hunt, M.P., Litovsky, C.P., Tanner, N.J., Deutsch, G.K., Bernstein, J.D., Harrison, M.B., Khazenon, A.M., Jiang, J., Sha, S.J., Fredericks, C.A., Rutt, B.K., Wagner, A.D., 2020. Hippocampal and cortical mechanisms at retrieval explain variability in episodic remembering in older adults. *ELife* 9, e55335. doi:[10.7554/eLife.55335](https://doi.org/10.7554/eLife.55335).

- Trelle, A.N., Henson, R.N., Simons, J.S., 2019. Neural evidence for age-related differences in representational quality and strategic retrieval processes. *Neurobiol Aging* 84, 50–60. doi:[10.1016/j.neurobiolaging.2019.07.012](https://doi.org/10.1016/j.neurobiolaging.2019.07.012).
- Tun, P.A., Wingfield, A., Rosen, M.J., Blanchard, L., 1998. Response latencies for false memories: gist-based processes in normal aging. *Psychol Aging* 13 (2), 230–241.
- Turney, I.C., Dennis, N.A., 2017. Elucidating the neural correlates of related false memories using a systematic measure of perceptual relatedness. *NeuroImage* 146, 940–950. doi:[10.1016/j.neuroimage.2016.09.005](https://doi.org/10.1016/j.neuroimage.2016.09.005).
- Vaidya, C.J., Zhao, M., Desmond, J.E., Gabrieli, J.D.E., 2002. Evidence for cortical encoding specificity in episodic memory: memory-induced re-activation of picture processing areas. *Neuropsychologia* 40 (12), 2136–2143. doi:[10.1016/S0028-3932\(02\)00053-2](https://doi.org/10.1016/S0028-3932(02)00053-2).
- Wang, W.-C., Wing, E.A., Murphy, D.L.K., Luber, B.M., Lisanby, S.H., Cabeza, R., Davis, S.W., 2018. Excitatory TMS modulates memory representations. *Cogn Neurosci* 9 (3–4), 151–166. doi:[10.1080/17588928.2018.1512482](https://doi.org/10.1080/17588928.2018.1512482).
- Webb, C.E., Dennis, N.A., 2018. Differentiating true and false schematic memories in older adults. *J Gerontol B* 74, 1111–1120.
- Webb, C.E., Turney, I.C., Dennis, N.A., 2016. What's the gist? The influence of schemas on the neural correlates underlying true and false memories. *Neuropsychologia* 93, 61–75.
- Wheeler, M.E., Buckner, R.L., 2004. Functional-anatomic correlates of remembering and knowing. *NeuroImage* 21 (4), 1337–1349. doi:[10.1016/j.neuroimage.2003.11.001](https://doi.org/10.1016/j.neuroimage.2003.11.001).
- Wheeler, M.E., Petersen, S.E., Buckner, R.L., 2000. Memory's echo: vivid remembering reactivates sensory-specific cortex. *Proc Natl Acad Sci* 97 (20), 11125–11129.
- Wing, E.A., Geib, B.R., Wang, W.-C., Monge, Z., Davis, S.W., Cabeza, R., 2020. Cortical overlap and cortical-hippocampal interactions predict subsequent true and false memory. *J Neurosci* 40 (9), 1920–1930. doi:[10.1523/JNEUROSCI.1766-19.2020](https://doi.org/10.1523/JNEUROSCI.1766-19.2020).
- Yassa, M.A., Mattfeld, A.T., Stark, S.M., Stark, C.E.L., 2011. Age-related memory deficits linked to circuit-specific disruptions in the hippocampus. *Proc Natl Acad Sci of the United States of America* 108 (21), 8873–8878. doi:[10.1073/pnas.1101567108](https://doi.org/10.1073/pnas.1101567108).
- Yassa, M.A., Stark, C.E.L., 2011. Pattern separation in the hippocampus. *Trends Neurosci* 34 (10), 515–525. doi:[10.1016/j.tins.2011.06.006](https://doi.org/10.1016/j.tins.2011.06.006).
- Ye, Z., Zhu, B., Zhuang, L., Lu, Z., Chen, C., Xue, G., 2016. Neural global pattern similarity underlies true and false memories. *J Neurosci* 36 (25), 6792–6802. doi:[10.1523/JNEUROSCI.0425-16.2016](https://doi.org/10.1523/JNEUROSCI.0425-16.2016).